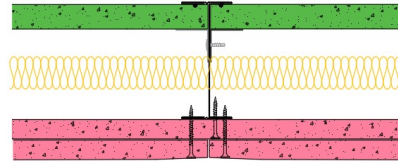


## **SE92-S-62(25) - SPEEDLINE System Data Sheet - Version V1 (24-10-23)**

SPEEDLINE 92mm 'I' Stud Shaft Encasement  
@600mm Ctrs, with 2x Siniat GTEC 15mm Fire  
Board, Siniat GTEC 19mm Fire CoreBoard, 25mm  
APR



### **System Performance Breakdown**

Fire Resistance:

BS476 Part 22:1987:

**120/120 FromShaftSide, 60/60 FromLandingSide** Minutes  
(Integrity/Insulation). See note 3 below

Test Ref & Date or Applied Ref & Report:

**BRE-P100456-1083 - BRE Report P102396-1012C**

Max Height:

**Refer to Speedline Specification Clause**

Thickness:

**124 mm.** (At Base Track, Excluding Finishes)

Duty Grade: BS 5234: Part 2:1992:

**Severe - Annexes A-F**

Sound Insulation:

**47 R<sub>w</sub>dB**, Date Tested or Assessed Against -

<sup>3</sup>Note: When exposed to fire on the landing side, these systems did not satisfy the insulation performance criteria on the framing members. Therefore, when specifying this system, it must be checked with the relevant approval authority, for the building project that this is acceptable, perhaps on the grounds that there will be no combustible material in close proximity, of the framing sections within the shaft.

TESTED AT ONE OF THE UKAS  
ACCREDITED LABORATORIES  
BELOW

B.T.C  
(H-Ref on Graph)



B.R.E



AIRO



S.R.L

